



South Milwaukee Historical Society

717 Milwaukee Avenue, 53172

NEWSLETTER January 2004

OFFICERS

President	Don Bulley	762-7605
V. President	Addie Becker	764-2118
Secretary	Joyce Bulley	762-7605
Treasurer	Theresa Aghbashian	762-5623
Past President	Dean Marlowe	768-8790
Curator-Historian	Gertrude Endthoff	762-8852

BOARD OF DIRECTORS (Term Expires)

Betty Chovanec	2005	762-3428
Cecelia Pomahac	2005	768-0167
Jewell Heise	2004	762-4650
Barb Mueller	2004	762-2712
Eunice Hahn	2003	764-3689
Dolores Kowalski	2003	762-4231

Barb Mueller is Sunshine Chairperson 762-2712



Grant Park in Winter

Dates to Remember: Saturday, Feb. 14, 2004 Annual dinner, Social hour, 5:00PM

menu: Chicken Cordon Bleu, salad, baked potato, vegetables, lemon pie

Entertainment:

From the President:

If it's January, it must be almost time for our Annual Historical Society Dinner. It is one of the most important events of the Historical Society's year. This year it will be on Valentine's Day, February 14th 2004 at the South Milwaukee Community Center, 1919 12th Avenue. Be a sweetheart and bring your sweetheart to the event. The Historical Society needs and appreciates your support. The evening begins with a Social Hour at 5:00 PM. Dinner will be served at 6:00 PM. There will be entertainment following dinner and door prizes after that. Tickets are \$18.00. The deadline for reservations is February 4th. Make your reservations with Addie Becker at 764-2118. If you have a door prize you would like to donate for the dinner, please call Don at (414) 762,7605.

Have you noticed the "Yellowstone Trail" markers in town? It was through the efforts of Nels Monson that we learned about this historic trail, which passed through South

Milwaukee in the 1920's. The Trail Association has designated Nels Monson as the Trailmaster for our area. The signs guide tourists who like to follow historic trails around the country.

The sale of Christmas limited edition ornaments with pictures of local sites continues. Last year the scene on the ornament was of the entrance to the seven bridges. This year the ornament has a scene showing the dam and pond with the warming house in the background. Next year the ornament is expected to show the historic "Fowle House", which is now being used as the golf course clubhouse. These ornaments are currently available at \$12.00 each. Contact the Historical Society at 762-7605 or the Association of Commerce at city hall.

Sometime this year, Milwaukee County Historic Sites committee will install a plaque by the site of the Oak Creek Dam and millstones on Mill Street indicating that it is a Milwaukee County Historic Site.

History matters- the trail you followed in the past is a good indication of where you are headed in the future.

Historically Yours,

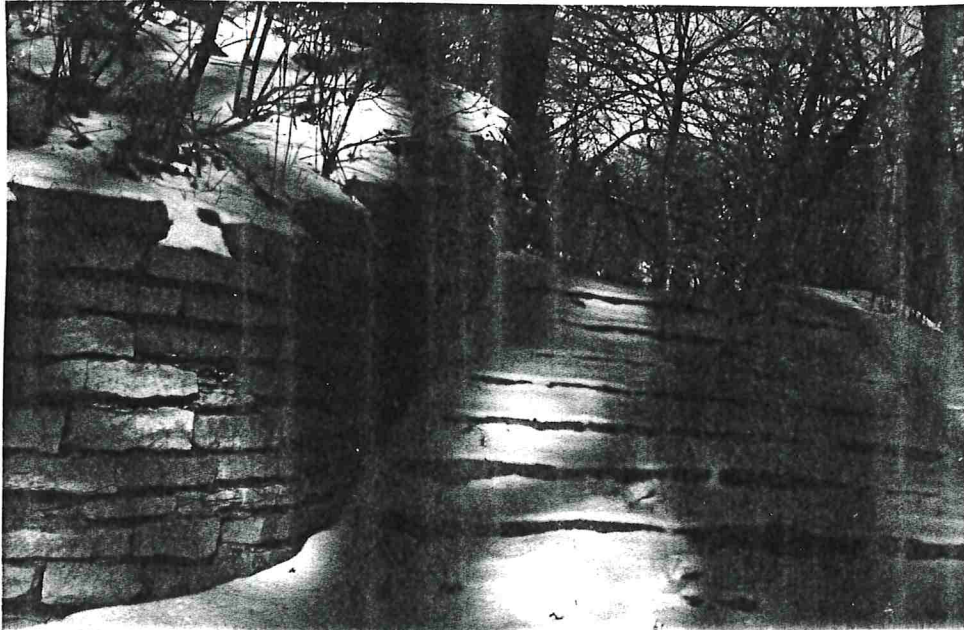
Don Bulley, President

Curator's Corner by Gertrude Endthoff

Museum Visitations Call 762-8852 or D.Bulley at 762-7605 Allow 45 minutes. The South Milwaukee Historical Society Museum is open for viewing by appointment. Visitors, school groups, scouts, families, clubs and individuals are welcome.

A box of artifacts was sent to the Museum. It included a box of 5 looseleaf binders of collectible materials. A thank you was sent to Mary Ellen Kay Andrew for clothes worn in shows and theatre by Lydia Zimmerman and Lowell Kay. They were lovely in their time. We received five hats from the 1930's and 40's to add to our collection.

Please attend the Annual dinner February 14, 2004 at the Community Center.
Your support is appreciated.



Grant Park in Winter

For only \$100.00 you will never have to remember to send in your dues again. Use the form below to remit your dues payments.

South Milwaukee Historical Society Membership form:

Name: _____ Date: _____

Street: _____

City: _____ State _____ Zip _____

Telephone Number: _____

Type of membership: _____ amount: _____

Form of payment: cash _____ check _____

Dinner reservation for _____ person/s @ \$18.00 per person _____

Senior, \$6.00; Single, \$8.00; Family, \$10.00; Life, \$100.00; Business, \$15.00;

Make checks payable to South Milwaukee Historical Society. Send membership dues and dinner reservations to Membership Chairperson, Addie Becker, 526 Sycamore Ave., South Milwaukee, WI 53172 (414)764-2118.

The South Milwaukee Historical Society would like to extend our wishes, condolences or congratulations to its members. If you know of someone who should be remembered please contact Sunshine Chairperson Barbara Mueller, 762-2712. If you leave a message please indicate if the card should be sent to their home, hospital or nursing home. The name of the hospital or nursing home would also be appreciated.

Wanted--Jelly Jars with covers--Call Jewell Heise, 762-4650.

SAVE grocery receipts from Piggly Wiggly for Historical Society. Mail to Jewell Heise, 1822 Manitoba Ave., South Milwaukee, WI 53172. Thanks for the added effort.

Newsletter published quarterly
News Editor: Lois L. Schreiter
Labels by Stephen F. Schreiter
Printing by Gertrude Endthoff

Grant Park Digital
Photos by S.F. Schreiter



South Milwaukee Historical Society
717 Milwaukee Avenue
South Milwaukee, WI 53172

□

