



South Milwaukee Historical Society

717 Milwaukee Ave., South Milwaukee, WI 53172
NEWSLETTER JANUARY, 1991

OFFICERS 1989-1990

President	Rick Tangen	762-2199
Vice President	Richard Thinnes	762-6214 <i>N</i>
Secretary	Theresa Aghbashian	762-5623
Treasurer	Laura Hook	762-0635
Past President	Addie Becker	764-2118 <i>N</i>
Curator/Historian	Gertrude Endthoff	762-8852

BOARD OF DIRECTORS: (term expires)

Steve Czerwicznik	1993	762-2089
Arline Barsamian	1992	762-3624
Jewell Heise	1992	762-4650
Dr. Harold Hein	1991	483-4826
Mary Magnuson	1991	762-9428



MARK YOUR CALENDARS:

JANUARY 14	BOARD MEETING at Museum 7 pm
FEBRUARY 16	ANNUAL DINNER MEETING at B.E. Club, \$11.50 per person Social hour 5:30 to 6:30 pm Dinner 6:30 pm Menu: Baked Stuffed Pork Chop, Oven Brownd Potato, Broccoli with Cheese Sauce, Black Forest Torte Entertainment: S. Milw. High School Madrigal Singers
MARCH 11	REGULAR MEETING AT MUSEUM 7 pm
APRIL 9	BOARD MEETING at Museum 7 pm
MAY 13	POT LUCK SUPPER AT SENIOR CENTER, 5:30 pm



LETTER FROM THE PRESIDENT:

I hope everyone had a very enjoyable holiday season.

We had a fairly good bake and craft sale.

The ceilings in your historical house have been painted and look nice. Most of the electrical wiring has been done. The only thing left is to put the light on the sign outside. A side note to this is that we did get the money back from the first electrician for his work not done.

The annual dinner will be February 16, at the B.E. Club. We always have a good time there. The cost of the evening is \$11.50 for the meal and program. The food will be stuffed pork chop, with applesauce, pecan dressing, broccoli with cheese sauce, oven browned potatoes, and Black Forest torte. Please send reservations in to Laura Hook on or before February 4th. There will be a cash bar at 5:30 pm and we will eat at 6:30 pm, have a short meeting, than have a program of singers from the high school.

Some other dates of importance for the coming year: May 13 is the pot luck supper at the Senior Center (also elections); the first Friday and Saturday in June for your rummage sale; July 27th and 28th is Heritage Days. We will have the trolley again from the city. On September 14 we host the Metropolitan Regional Historical Convention. We need a whole lot of help on all of these projects.

We also may have a chance to get some money from the city through a federal block grant. More at the meeting on this.

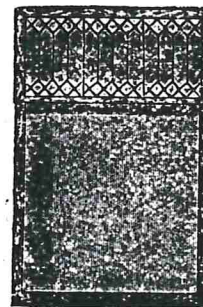
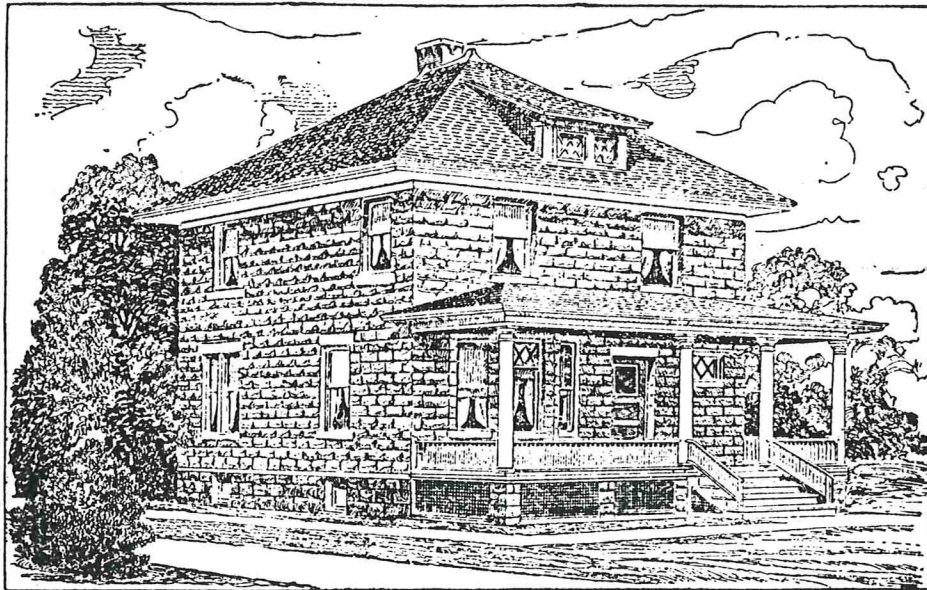
Richard Tangen, President



SEARS HOUSES (first in a series)

The following are house plans offered by SEARS. If you have a house like this or know someone who has, contact Lois Schreiter, 762-5214. We would like to gather more information about the houses.

SEARS, ROEBUCK & CO., CHICAGO, ILL. CATALOGUE S.H. I



THIS ARTISTIC FRONT WINDOW, bottom sash, size, 40x46, glazed with best quality double strength glass. Top sash, size, 40x14, glazed with beautiful leaded art glass, as shown in illustration.

WE SPECIFY

the best A quality Nona River soft pine doors, in five-panel style, finely selected and are suitable for natural oil finishes.



MASSIVE FRONT DOOR

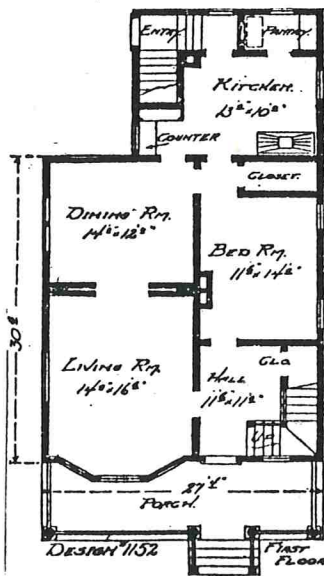
exactly like illustration to the left. Made of the finest selected pine in plain design. Glazed with the finest beveled French plate glass. Size, 3x7 feet, 1/2 inches thick.

REAR DOOR made of the finest selected A quality Nona River soft pine; beautiful raised panel design, glazed with artistic etched glass design, finished in natural finish. Size, 3x7 feet, 1/2 inches thick.



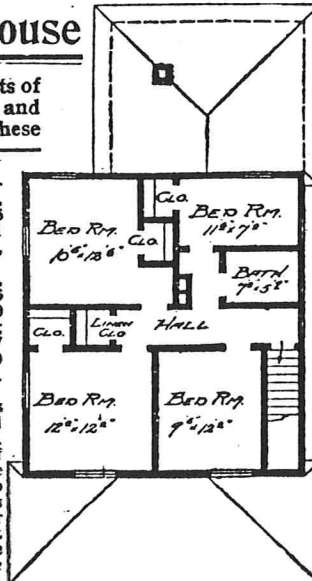
Our \$1,995.00 House

illustrated above, consists of nine good sized rooms and bath room, as shown in these floor plans.



FIRST FLOOR, kitchen, 13x10 feet, and pantry; dining room, 14x12 feet; living room, 14x16 feet 6 inches; reception hall, 11 feet 6 inches by 11 feet; bedroom, 11 feet 6 inches by 14 feet.
SECOND FLOOR, bedroom, 12x12 feet; bedroom, 9 feet 6 inches by 12 feet; bedroom, 10 feet 6 inches by 12 feet 6 inches; bedroom, 11 feet 6 inches by 7 feet; bathroom, 7 feet by 5 feet 9 inches; linen closet and hall. Bedrooms have large closets.

The arrangement of our houses is such that they can be well heated with very little expense. Our \$1,995.00 house is but one of the many frame or concrete houses for which we are able to furnish our free building plans and specifications. No matter what price house you may want to build, remember we can save you from 25 to 50 per cent. Be sure to read all about our wonderful free plan offer, which is fully explained on page 694.



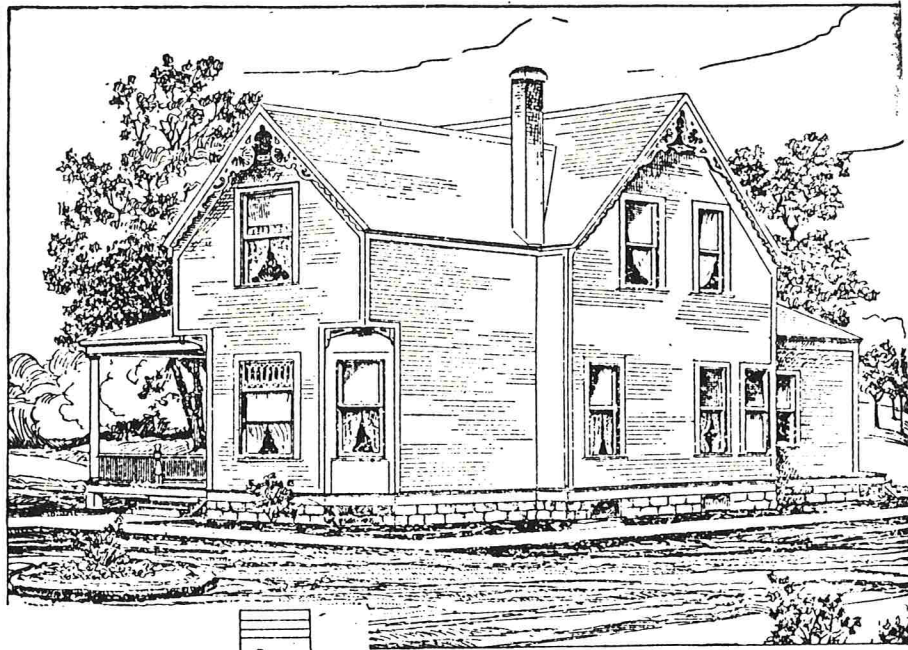
THIS HANDSOME NINE-ROOM CONCRETE RESIDENCE

a structure which could not be duplicated for less than \$3,000.00 if built in the old fashioned way with natural finished stone, can be built according to our free plans and specifications for \$1,995.00. This elegant house is constructed in 4-inch by 16-inch concrete blocks, a material which is identical with hand finished stone, but which will outwear, give better insulation, is more sanitary, perfectly dry at all seasons of the year, is in summer warm in winter. Concrete construction is no longer the experimental stage. Some of the most costly and largest residential and office buildings erected during the last ten years have been made of concrete construction and have proven to be superior to any other kind of stone buildings in every respect.

CONCRETE HOUSES can be erected at one-third less than any other kind of stone structure. They can be built in less time and with much lower priced labor than any kind of structures. With one of our Wizard or Buckeye Block Machines, fully described on pages 574 to 579, anyone can erect a sufficient number of blocks at leisure moments during the dull part of the year to erect his buildings and thus save the cost of the job. Our \$1,995.00 price includes the cost of hired labor.

wonderful free plan offer, which is fully explained on page 694.

DESIGN #1152 SECOND FLOOR



\$1700⁰⁰

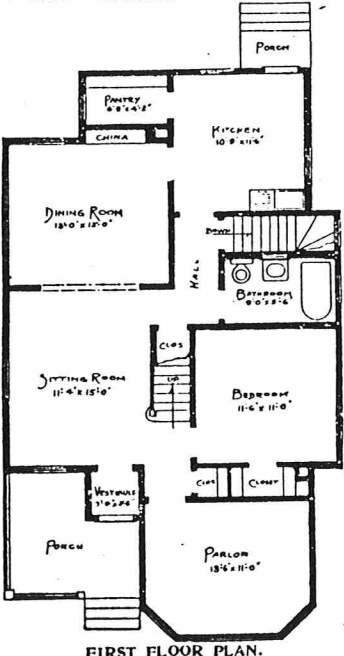
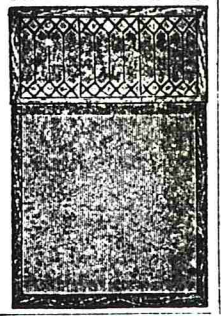


THE FRONT DOOR specified for this house is exactly like illustration. It is made of the finest quality Nona River pine with genuine wood carvings and massive cap and apron trimmings. Size, 2 feet 8 inches by 6 feet 8 inches, 1 3/4 inches thick, glazed with etched art glass, as shown in this illustration. Get our plans and specifications and see how good all the material is that we specify in our houses.

ARTISTIC FRONT WINDOW furnished with this



house is exactly like illustration to the right. Top sash 40-x16 inches, glazed with art leaded sheet glass. Bottom sash 40x40 inches, glazed with heavy double strength AA quality glass.
FIVE CROSS PANEL INTERIOR DOORS made of the finest quality Nona River soft pine, yellow pine panels, perfectly adapted for oil finish, size, 2 ft. 6 in. by 6 ft. 6 in.



FIRST FLOOR PLAN.

A GOOD, SUBSTANTIAL HOUSE, consisting of two floors and basement with sliding exterior and shingle roof and stone foundation.

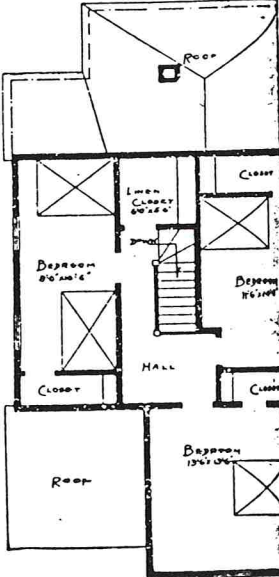
FIRST FLOOR contains large parlor, vestibule hall, sitting room, bedroom with closet, bathroom, dining room with china closet, a good size kitchen and pantry.

SECOND FLOOR contains three large bedrooms, large clothes closets, linen closet and hall.

THE INTERIOR finish in the first and second floors is made of yellow pine, which will make an elegant natural finish, giving an appearance equal, if not superior, to oak. The kitchen and pantry have a maple floor.

BASEMENT. Large and roomy basement; size, 27 feet 6 inches by 33 feet 4 inches and 6 feet 3 inches high, well lighted and ventilated. Width of house, 27 feet 6 inches; length of house, 47 feet 3 inches; height of first story, 9 feet; height of second story, 8 feet.

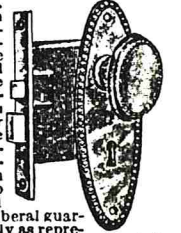
Every plan we offer has the seal of a licensed architect affixed, which is a guarantee that the specifications are in accordance with the building laws and will stand the closest inspection by city or country building inspectors.



SECOND FLOOR PLAN.

THIS ILLUSTRATION AT THE RIGHT shows the kind of hardware used in our

\$1,700.00 house. Front door lock in the beautiful colonial pattern is furnished in antique copper or polished bronze finish. We specify all material we furnish by giving it our regular catalogue number, thus enabling our customers to refer to our catalogue, which gives very complete descriptions as to quality, size, etc. Every article furnished by us in all of our houses is sold under our liberal guarantee, providing that if goods are not exactly as represented same may be returned and your money will be refunded.



WORK AT THE MUSEUM: THIRD SATURDAY of each month-- 10 AM TO 12 AM

Our best wishes for a speedy recovery to Betty Chovanec following her knee surgery.

If you know of any members that are ill, please call Mary Magnuson, 762-9428 with the information, so she can send them a card.

NOTICE BY-LAWS AMENDED: ALL MEETINGS WILL BE HELD ON THE 2ND MONDAYS.

SEND FAMILY HISTORY INFORMATION TO: S.M.H.S., 717 MILWAUKEE AVE., SOUTH MILWAUKEE, WI 53172

For Genealogy research-a nominal fee will be charged.

Published in Jan., Apr., Aug., Nov. each year.

Newspaper editor: Lois Schreiter, 762-5214



Donations are being accepted for ceiling repair and basement remodeling. Send to S.M.H.S. / Laura Hook

Dues are due each January. If dues are not received by March the members name will be removed from the mailing list. THANK YOU FOR YOUR SUPPORT WITH TIME, MONEY AND ENCOURAGEMENT OF THE HISTORICAL SOCIETY'S PROGRAMS.

THANK US BY BECOMING A MEMBER. YOU ARE NEEDED.



Dues:

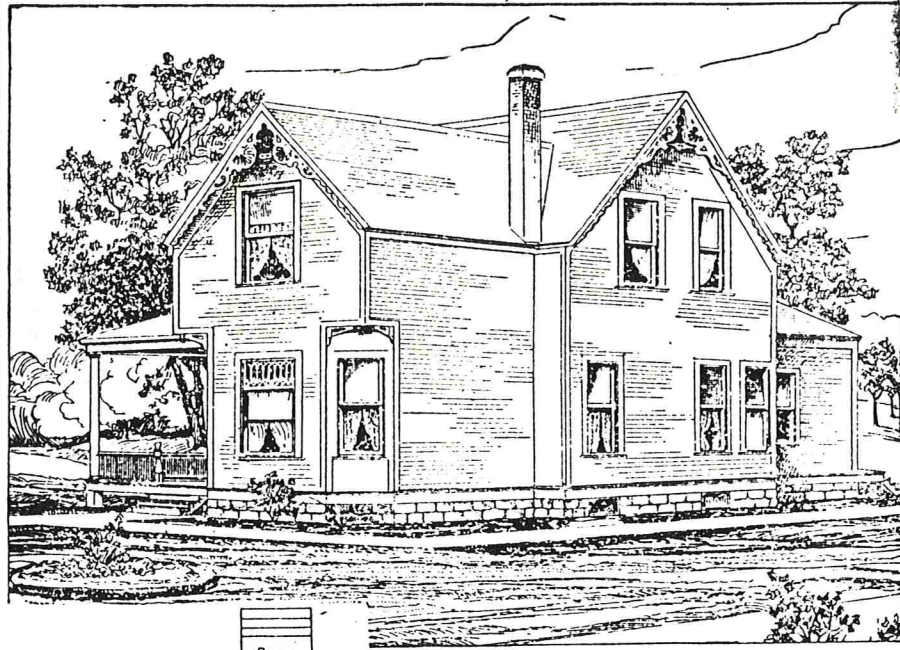
Seniors	\$4.00	Professional	\$10.00
Single	\$5.00	Life Membership	\$100.00
Family	\$6.00	HELP PRESERVE YOUR HERITAGE. YOU LIVE HERE.	

Send to Laura Hook
703 Minnesota Ave.
South Milwaukee, WI. 53172

Name _____
Street _____ City _____ Zip _____
Phone _____ I can help with _____
Type of Dues _____ \$ _____
ANNUAL DINNER for _____ people at \$11.50 each \$ _____
TOTAL \$ _____

South Milwaukee Historical Society
717 Milwaukee Avenue
South Milwaukee, WI 53172





\$1700⁰⁰



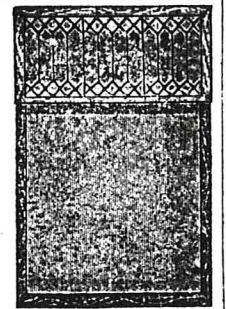
THE FRONT DOOR specified for this house is exactly like illustration. It is made of the finest quality Nona River pine with genuine wood carvings and massive cap and apron trimmings. Size, 2 feet 8 inches by 6 feet 8 inches, 1 3/4 inches thick, glazed with etched art glass, as shown in this illustration. Get our plans and specifications and see how good all the material is that we specify in our houses.

ARTISTIC FRONT WINDOW furnished with this



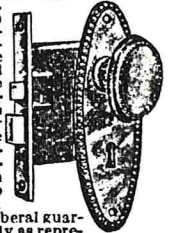
house is exactly like illustration to the right. Top sash 40x16 inches, glazed with art leaded sheet glass. Bottom sash 40x40 inches, glazed with heavy double strength AA quality glass.

FIVE CROSS PANEL INTERIOR DOORS made of the finest quality Nona River soft pine, yellow pine panels, perfectly adapted for oil finish, size, 2 ft. 6 in. by 6 ft. 6 in.



THIS ILLUSTRATION AT THE RIGHT shows the kind of hardware used in our

\$1,700.00 house. Front door lock in the beautiful colonial pattern is furnished in antique copper or polished bronze finish. We specify all material we furnish by giving it our regular catalogue number, thus enabling our customers to refer to our catalogue, which gives very complete descriptions as to quality, size, etc. Every article furnished by us in all of our houses is sold under our liberal guarantee, providing that if goods are not exactly as represented same may be returned and your money will be refunded.



A GOOD, SUBSTANTIAL HOUSE, consisting of two floors and basement with siding exterior and shingle roof and stone foundation.

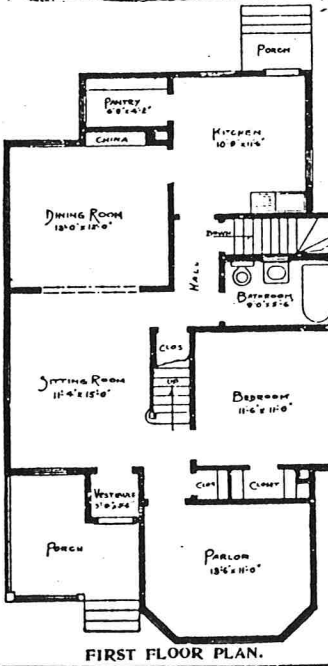
FIRST FLOOR contains large parlor, vestibule hall, sitting room, bedroom with closet, bathroom, dining room with china closet, a good size kitchen and pantry.

SECOND FLOOR contains three large bedrooms, large clothes closets, linen closet and hall.

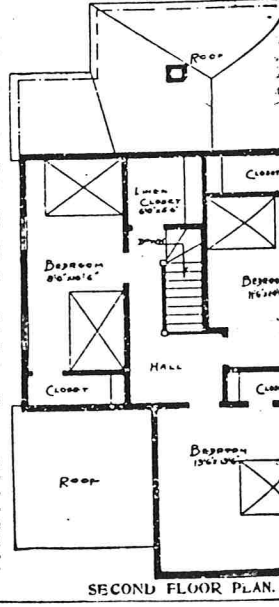
THE INTERIOR finish in the first and second floors is made of yellow pine, which will make an elegant natural finish, giving an appearance equal, if not superior, to oak. The kitchen and pantry have a maple floor.

BASEMENT. Large and roomy basement; size, 27 feet 6 inches by 33 feet 4 inches and 6 feet 3 inches high, well lighted and ventilated. Width of house, 27 feet 6 inches; length of house, 47 feet 3 inches; height of first story, 9 feet; height of second story, 8 feet.

Every plan we offer has the seal of a licensed architect affixed, which is a guarantee that the specifications are in accordance with the building laws and will stand the closest inspection by city or country building inspectors.



FIRST FLOOR PLAN.



SECOND FLOOR PLAN.

WORK AT THE MUSEUM: THIRD SATURDAY of each month-- 10 AM TO 12 AM

Our best wishes for a speedy recovery to Betty Chovanec following her knee surgery.

If you know of any members that are ill, please call Mary Magnuson, 762-9428 with the information, so she can send them a card.

NOTICE BY-LAWS AMENDED: ALL MEETINGS WILL BE HELD ON THE 2ND MONDAYS.

SEND FAMILY HISTORY INFORMATION TO: S.M.H.S., 717 MILWAUKEE AVE., SOUTH MILWAUKEE, WI 53172

For Genealogy research a nominal fee will be charged.

Published in Jan., Apr., Aug., Nov. each year.

Newspaper editor: Lois Schreiter, 762-5214



Donations are being accepted for ceiling repair and basement remodeling. Send to S.M.H.S. / Laura Hook

Dues are due each January. If dues are not received by March the members name will be removed from the mailing list. THANK YOU FOR YOUR SUPPORT WITH TIME, MONEY AND ENCOURAGEMENT OF THE HISTORICAL SOCIETY'S PROGRAMS.

THANK US BY BECOMING A MEMBER. YOU ARE NEEDED.



Dues:

Seniors	\$4.00	Professional	\$10.00
Single	\$5.00	Life Membership	\$100.00
Family	\$6.00	HELP PRESERVE YOUR HERITAGE. YOU LIVE HERE.	

Send to Laura Hook
703 Minnesota Ave.
South Milwaukee, WI. 53172

Name _____
 Street _____ City _____ Zip _____
 Phone _____ I can help with _____
 Type of Dues _____ \$ _____
 ANNUAL DINNER for _____ people at \$11.50 each \$ _____
 TOTAL \$ _____

South Milwaukee Historical Society
717 Milwaukee Avenue
South Milwaukee, WI 53172

