



South Milwaukee Historical Society

717 Milwaukee Ave., South Milwaukee, WI 53172
NEWSLETTER April, 1990

OFFICERS 1989-1990

President	Rick Tangen	762-2199
Vice President	Patricia Bordak	764-4394
Secretary	Theresa Aghbashian	762-5623
Treasurer	Laura Hook	762-0635
Past President	Addie Becker	764-2118
Curator/Historian	Gertrude Endthoff	762-8852

BOARD OF DIRECTORS: (term expires)

Arline Barsamian	1992	762-3624
Lorraine Fuhreck	1992	762-1915
Dr. Harold Hein	1991	483-4826
Mary Magnuson	1991	762-9428
Gertrude Endthoff	1990	762-8852
Steve Czerwicznik	1990	762-2089

EVENTS:

MAY 7 SPRING POT LUCK SUPPER *Senior Center 5:30 P.M.*

MAY 27 MEMORIAL DAY WEEKEND - MUSEUM OPEN SUNDAYS 2-4 PM

JUNE 1 & 2 RUMMAGE SALE

LETTER FROM THE PRESIDENT:

I would like to thank everyone who helped out at the South Milwaukee Business and Industry Fair. We did very well this year.

This coming summer the South Milwaukee Association of Commerce is planning a one week celebration called "Heritage Days." Some events include: fish boil, five mile walk, library book sale and side walk sales. We, the Historical Society, will have the Milwaukee Trolley for one day; July 29 from 1:00pm til 4:00pm for tours around the city. We will need a lot of help on this day. PLEASE keep it open!

Also, another VERY important date is the first Friday and Saturday in June for our RUMMAGE SALE. We will be taking in items (no clothes please) and pricing them the weekends before, call me if you have items.

Cleaning is the third Saturday of each month. We have lots to clean for summer and Heritage Days. Please call me or Gert and let us know when you can come and help.

May is our Pot Luck Supper at the Senior Center. It is also our elections. If you would like to help on the Board of Directors, call me and you will be put in nomination.

We are also looking for house sitters for the summer on Sundays from 2:00pm, til 4:00pm. PLEASE CALL AND HELP.

Richard Tangen, President

BASKETS - FROM SHOPS TO FACTORIES (This is the second in a series of three articles about baskets made in South Milwaukee.)

John Grover disposed of his interests in the basket shop in 1875 and retired to his farm with his wife, Angelina (McCreedy). One of the reasons for the Grover basket shop to close may have been the dwindling supply of raw materials that were provided along the creek area over the 20 year period. Some of its good points had been not only the supply of water that is necessary in basket making, but the willow, oak and ash trees in the vicinity that provided the splints for the baskets.

Splint baskets are the workhorses of basketry. They were used for farm produce, coal and market baskets. The thin strips of wood are used in a plain uncomplicated weave, over one, under one. Splints from ash were traditionally made by pounding a log that had been soaked over winter to loosen the annual rings of growth. Oak was cut into lengths of about four feet with a diameter of one foot. Wedges of it were then boiled to make it pliable. An edge was started with a chisle, hit with a mallet and an oak lath pulled off by hand. It would have a width of 2-3 inches, a length of 4 feet, and a thickness of less than 1/4 inch. The laths were then put in a machine which cut the thickness in half and it would then be planed and smoothed by hand with a draw knife.

Basket rims were made with a single length of hazel, boiled until pliable, then fitted around a form. All the splints were soaked before working with them and when the baskets dried out the lath set hard, making the construction very rigid and strong.

Willow harvesting along the creek was done in winter by hand. The canes were bundled and left until spring when the bark was easily removed in a brake by pulling the rods through. They were then left to dry out in the open and sorted according to length. Wash baskets were made of willow in Oak Creek.

Besides John Grover, Sanford Grover, another brother who came to Oak Creek in 1862, left to serve in the Civil War and then returned to become one of the towns well-known citizen. Warren Grover, J.A. Bethel and Leonard Heidelberg were among those that also made splint baskets, which were shipped all over the mid-west.

Perhaps one of the best remembered basket factories was the Moore, later the Moore-Whitmore Basket Factory which was located on the south side of Oak Creek, west of Chicago Avenue and just south of what is now Parkway Drive.

In 1849 James Moore, his wife Elizabeth Dean and several children came to Oak Creek from England. Moore bought a sawmill with water power from William Shaw, which was located on the west side of Chicago road on the creek. He built other buildings to the south of the creek and installed machinery for the manufacture of cotton goods.

--to be continued--

CONGRATULATIONS TO GERTRUDE ENDTHOFF.

AT THE ANNUAL DINNER IN FEBRUARY, MAYOR GROBSCHMIDT AND THE CITY FATHERS PROCLAIMED AND ESTABLISHED A POSITION OF CITY HISTORIAN AND GERTRUDE ENDTHOFF WAS NAMED TO THAT POSITION.

WORK AT THE MUSEUM: SATURDAY, April 28, May 19, June 16 CLEAN UP DAYS AT MUSEUM. If you are able to help -- come!

Geneology help wanted by the Historical Society. Payment included. Experience required. Call 762-8852.

If you know of any members that are ill, please call Mary Magnuson, 762-9428 with the information, so she can send them a card.

RUMMAGE When cleaning cabinets -- don't discard the things you haven't used in years. Save those things for the Rummage Sale. Tax deductible appaisals are given for donated items. Items may be left on the back porch of the museum or call Rick Tangen. Your assistance is needed during the sale.

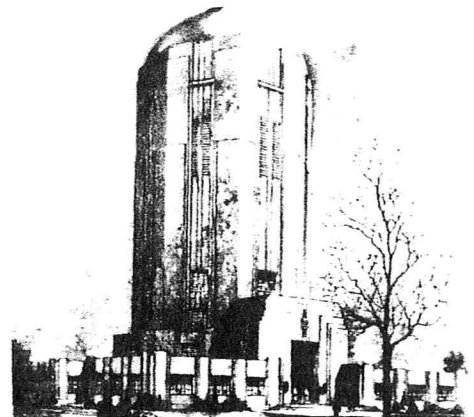
WE HAVE RECEIVED--

A BOX OF SOUTH MILWAUKEE CITY DIRECTORIES.
SEVERAL MORE LINCOLN BOOKS FROM DR. HEIN
A PICTURE BOOK OF LINCOLN STATUES FROM JANET HOBART SMITH
ADDITIONAL BOOK CASE IN LINCOLN ROOM
COLLECTION OF MATERIALS CONCERNING THE SPECTACLE OF MUSIC

THANK YOU. THANK YOU. THANK YOU. THANK YOU. THANK YOU. THANK YOU.

"Preservation '90: Rediscovering Our Past" is the program being offered by the Wisconsin Trust for Historic Preservation on May 11-12 at the Radisson Inn Green Bay. Topics include, "Heritage Corridor in Eastern Wisconsin," "Community Character: Planning to Retain It," "Researching a House History: Using Local Records." For more information about the conference call Larry Reed at (608)262-4771.

TOWN OF LAKE WATER TOWER AND MUNICIPAL BUILDING AT 4001 SOUTH 6TH STREET IS A HISTORIC STRUCTURE. IT WAS DECLARED SO BY THE CITY OF MILWAUKEE COMMON COUNCIL AFTER 2 YEARS OF STUDY. WATCH FOR NEWS OF ITS 50TH ANNIVERSARY CELEBRATION LATER THIS YEAR.



DO YOU HAVE any family history that you can share for our files?

SEND INFORMATION TO: S.M.H.S., 717 MILWAUKEE AVE.,
SOUTH MILWAUKEE, WI 53172

For Genealogy research a nominal fee will be charged.

Published in Jan., Apr., Aug., Nov. each year.

Newspaper editor: Lois Schreiter

Dues are due each January. If dues are not received by March, the member's name will be removed from the mailing list. THANK YOU FOR YOUR SUPPORT WITH TIME, MONEY AND ENCOURAGEMENT OF THE HISTORICAL SOCIETY'S PROGRAMS.

THANK US BY BECOMING A MEMBER. YOU ARE NEEDED.

Dues:

Seniors	\$4.00	Professional	\$10.00
Single	\$5.00	Life Membership	\$100.00
Family	\$6.00	HELP PRESERVE YOUR HERITAGE. YOU LIVE HERE.	

Send to Laura Hook
703 Minnesota Ave.
South Milwaukee, WI. 53172

Name _____
Street _____ City _____ Zip _____
Phone _____ I can help with _____
Type of Dues _____ \$ _____

South Milwaukee Historical Society
717 Milwaukee Avenue
South Milwaukee, WI 53172



MR. & MRS. STEPHEN SCHREITER
104 BROOKDALE DRIVE
SOUTH MILWAUKEE WI. 53172